

# Q-doc 100 Special

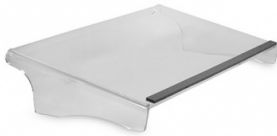
Indispensable to permanent workstations

 BAKKER ELKHUIZEN

*Work Smart - Feel Good*

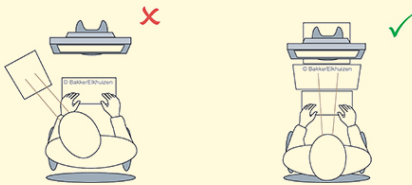


## Work in line and prevent neck pain.




You place the Q-doc 100 Special document holder between your screen and keyboard. That prevents unnatural head and neck movement.

There is less strain on your body because you work in a single line with the keyboard, document holder and screen.



To prevent neck rotation, documents should be placed between the keyboard and display screen. A sloping work surface reduces flexion of the neck and thus increases work comfort. An 'in-line' document holder provides a functional work surface and short viewing distances between the document, screen and keyboard. The result is increased productivity.

 [Read more online](#)

**Ergonomic:** reduces neck and eye strain and prevents neck pain and headaches.

**Efficient:** short viewing distances between document, screen and keyboard.

**Suitable for:** books of all thicknesses and heavy files.

**Fixed:** static reading angle of 30 degrees

**Clean-Desk:** you can stow a full-sized keyboard under the Q-doc 100 Special.

**Material:** clear acrylic.



<b>Width</b>	505 mm
<b>Height</b>	100 mm
<b>Depth</b>	285 mm
<b>Weight</b>	1.0 kg
<b>Product code</b>	BNEQDOC100SP