

# CityLite Slipcase 15,6"

A sleek and simple design

 BAKKER ELKHUIZEN

*Work Smart - Feel Good*

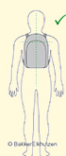


## Slim & lightweight laptop bag



This bag features a spacious main compartment for your laptop and a few documents. Its large front pocket holds your keys, phone and laptop accessories.

The bag comes in a sleek and simple design, with first-rate protection. Actually, it is the perfect laptop shoulder bag for laptops up to 15,6".



Ergonomic experts do not recommend carrying loads heavier than 4 to 6.4 kg by hand, depending on the distance, frequency and one's sex (Mital, et al, 1993).

 [Read more online](#)

**Practical:** the laptop can be fitted over the carry handle of a trolley.

**Compact:** the bag is compact, yet complete, and lightweight.

**Extra:** a extra compartment to fit your documents.

**Comfortable:** soft handles and padded shoulder straps.

**Suitable:** the laptop compartment fits laptop sizes 12" up to and including 15,6".



<b>Width</b>	425 mm
<b>Height</b>	310 mm
<b>Depth</b>	55 mm
<b>Weight</b>	480 gr
<b>Product code</b>	BNETSS960GL